

## **ADDENDUM NO. 2**

DATE: January 2, 2020

PROJECT: Owosso Water Treatment Plant Wash Water Pump and Piping Replacement  
DWRP #7457-01

OWNER: City of Owosso

BID DATE: Thursday, January 16, 2020 @ 3:00 p.m.

---

This Addendum forms a part of the Contract Documents and modifies the original Bidding Documents dated December 16, 2019, as noted below. Bidders shall acknowledge receipt of this Addendum in the space provided on the Bid Form. Failure to do so may subject the Bidder to disqualification.

This Addendum consists of two (2) letter size pages.

The following Project Manual Documents are included consisting of 1 page:

Section 00 31 19 – EXISTING CONDITION INFORMATION, consisting of 1 page.

The following Existing Condition Information is included, consisting of 2 pages.

Sheets 102 and 109, consisting of 2 pages.

The following Contract Drawings are being reissued (2 pages):

P-201 WASH WATER PUMP & PIPING PLAN & SECTIONS  
P-203 HIGH SERVICE PIPE PLAN

Total Pages for Addendum #2: 7 pages

## **CHANGES TO BIDDING REQUIREMENTS**

---

1. DOCUMENT 00 31 19 – EXISTING CONDITIONS INFORMATION. Add this document to the project manual including the referenced sheets.

**CHANGES TO TECHNICAL SPECIFICATIONS**

---

2. SECTION 40 05 67 – SPECIALIZED PRESSURE AND FLOW-CONTROL VALVES.

Paragraph 2.1.B.8.a.: delete “Failure Mode: CLOSED”.

Paragraph 2.1.C.3. Valve Components: remove “Type 316 stainless steel” and replace with “Copper/Bronze or Standard Manufacturer Offering”.

Paragraph 2.1.C.5.a. Control Trim: Fittings: remove “Type 304 stainless steel” and replace with “Copper/Bronze or Standard Manufacturer Offering”.

Paragraph 2.1.C.5.b. Control Trim: Pilot Tubing: remove “Type 316 stainless steel” and replace with “Copper/Bronze or Standard Manufacturer Offering”.

Paragraph 2.1.C 6. Anti-Cavitation Trim. Remove paragraph in its entirety.

**CHANGES TO CONTRACT DRAWINGS**

---

- 3. SHEET P-201 WASH WATER PUMP & PIPING PLAN & SECTIONS. Remove and replace this sheet.
- 4. SHEET P-203 HIGH SERVICE PIPE PLAN. Remove and replace this sheet.
- 5. SHEET P-301 PUMP, VALVE & PIPE SCHEDULES – change the following valve accessory

MARK ACCESSORIES

PRV-01	POSITION INDICATOR, ANTI-CAVITATION TRIM
--------	--

- 6. SHEET P-401 DETAIL 4 - PRESSURE GAUGE TAP DETAIL – Revise the leader and note for the 1-1/2” NPT as follows:

Remove “300 LB HALF COUPLING WELD TO PIPE OR TAPPED CONNECTION” and replace with “TAPPING SADDLE OR DIRECT TAPPED CONNECTION”.

**End of Addendum No. 2**

## DOCUMENT 00 31 19 - EXISTING CONDITION INFORMATION

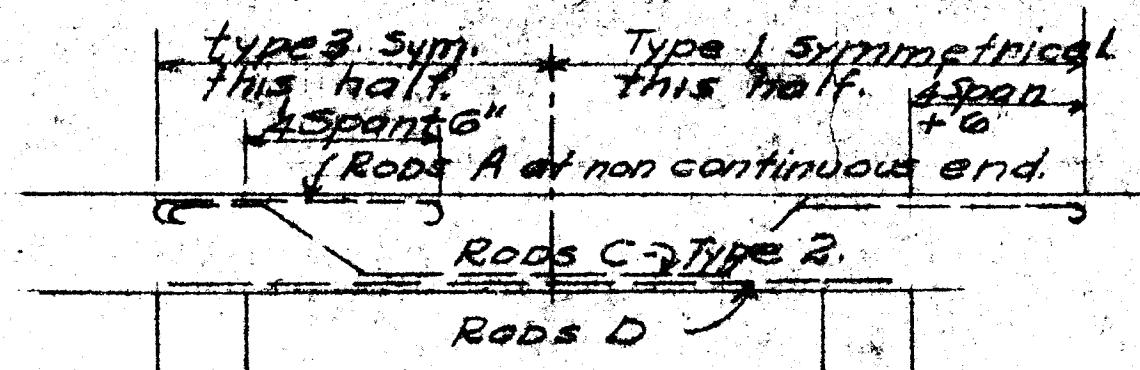
### 1.1 EXISTING CONDITION INFORMATION

- A. This Document with its referenced attachments is part of the Procurement and Contracting Requirements for Project. They provide Owner's information for Bidders' convenience and are intended to supplement rather than serve in lieu of the Bidders' own investigations. They are made available for Bidders' convenience and information, but are not a warranty of existing conditions. This Document and its attachments are not part of the Contract Documents.
- B. Existing drawings 102 and 109 issued 1936, prepared by H.P. Jones & Co. Engineers, Toledo Ohio, entitled: Owasso – Michigan, Water Works, Structural Details consisting of 2 numbered sheets that include information on existing conditions including previous construction at Project site are included herein.
- C. Related Requirements:
  - 1. Bidder is responsible for examination of Project site and existing conditions as deemed necessary for submittal of bid.

END OF DOCUMENT 00 31 19

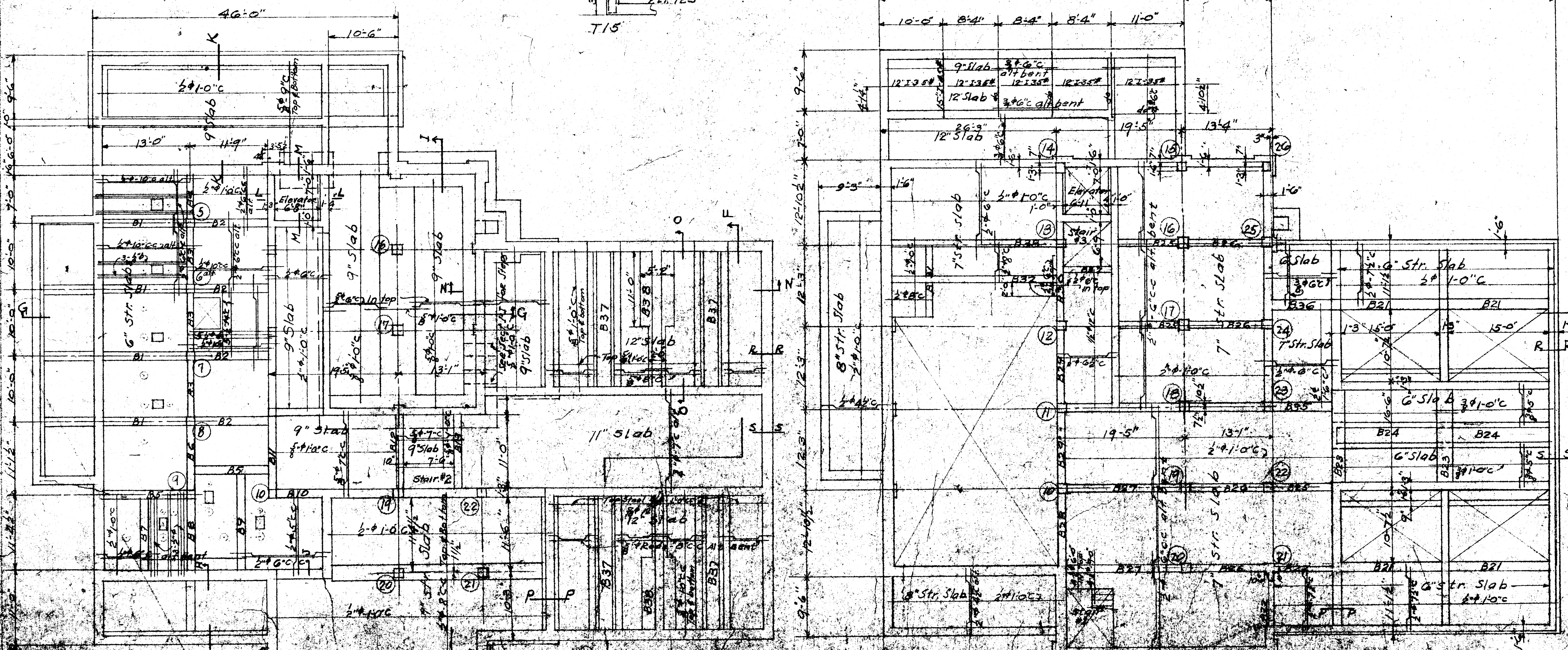
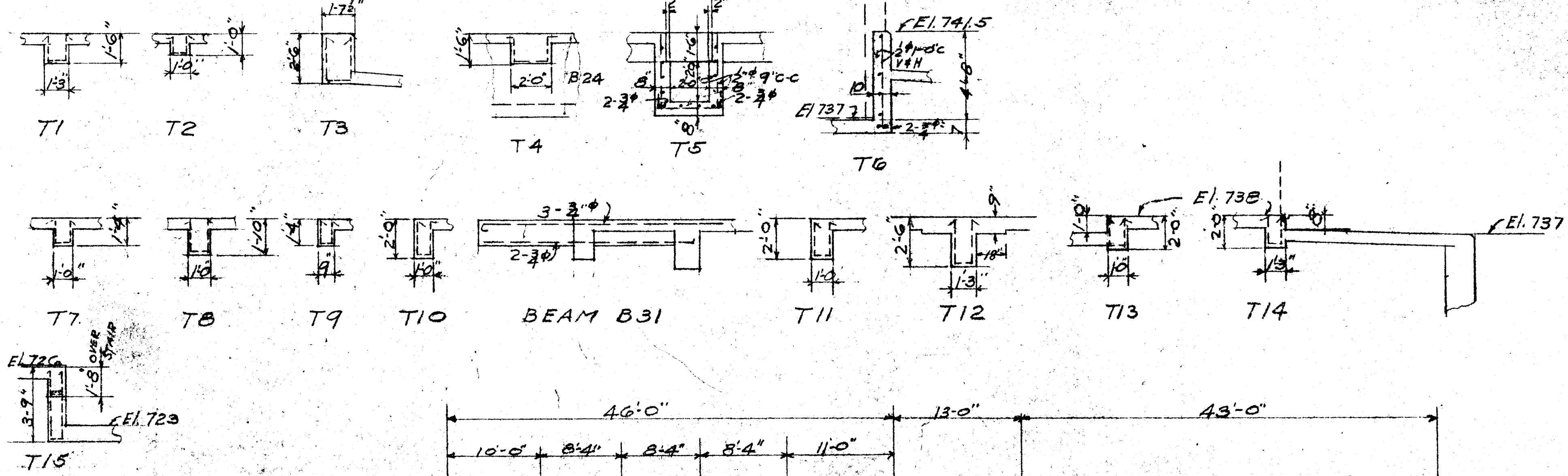


BEAM SCHEDULE											
Beam	Type	Rods A		Rods C			Rods D		Stirrups		
		No	Size	No	Size	Type	No	Size	No	Size	Spacing
B1	T1	2	3/4"	2	3/4"	2	2	3/4"	10	3/4"	8,8,10,10
B2	T1	2	3/4"	2	3/4"	2	2	3/4"	10	3/4"	"
B3	T2	-	-	2	5/8"	1	2	5/8"	6	3/4"	8,8,9"
B4	T2	2	5/8"	2	5/8"	2	2	5/8"	-	-	-
B5	T1	2	3/4"	2	3/4"	3	2	3/4"	12	3/4"	8,8,10,10,12
B6	T1	-	-	2	3/4"	1	2	3/4"	10	3/4"	8,8,10,12
B7	T1	2	3/4"	2	3/4"	3	2	3/4"	10	3/4"	"
B8	T1	2	3/4"	2	3/4"	2	2	3/4"	10	3/4"	"
B9	T1	2	3/4"	2	3/4"	3	2	3/4"	12	3/4"	8,8,10,10,12
B10	T2	-	-	-	-	-	-	-	-	-	-
B11	T1	2	3/4"	2	3/4"	3	2	3/4"	10	3/4"	8,8,10,12
B12	T15	2	3/4"	2	3/4"	3	2	3/4"	11	3/4"	1.0' c/c
B13	T1	2	3/4"	2	3/4"	3	2	3/4"	10	3/4"	8,8,10,12
B21	T3	2	1"	2	1"	2	2	1"	12	3/4"	5,5,7,7,9
B22	T6	SEE DETAIL		2	3/4"	-	2	3/4"	-	-	-
B23	T4	3	1"	3	7/8"	3	3	1"	10	3/4"	8,8,10,10
B24	T5	SEE DETAIL		-	-	-	-	-	-	-	-
B25	T2	2	5/8"	2	5/8"	2	2	5/8"	10	3/4"	8,8,8,8
B26	T8	2	3/4"	2	3/4"	2	2	3/4"	10	3/4"	8,8,10,10
B27	T8	2	1"	2	1"	2	2	1"	16	3/4"	8,8,8,8,10,10,10,10
B28	T9	2	5/8"	2	5/8"	2	2	5/8"	8	3/4"	8,8,8,8
B29	T9	-	-	-	-	-	-	-	-	-	-
B30	T10	2	3/4"	2	3/4"	2	2	3/4"	12	3/4"	8,8,10,10,10
B31	T7	SEE DETAIL		-	-	-	-	-	-	-	-
B32	T11	2	1"	2	1"	3	2	1"	14	3/4"	8,8,10,10,10,12,12
B33	T12	3	1 1/2"	2	1 1/2"	3	3	1 1/2"	24	2"	8,8,8,8,10,10,10,10,12,12,12,12
B34		SEE DETAIL		-	-	-	-	-	-	-	-
B35	T13	2	3/4"	2	5/8"	3	2	5/8"	8	3/4"	8,8,8,8
B36	T14	2	3/4"	2	3/4"	3	2	3/4"	8	3/4"	"
B37		-	-	-	-	-	3	3/4"	6	3/4"	8,8,8,8



TYPICAL DETAIL OF BEAM RODS

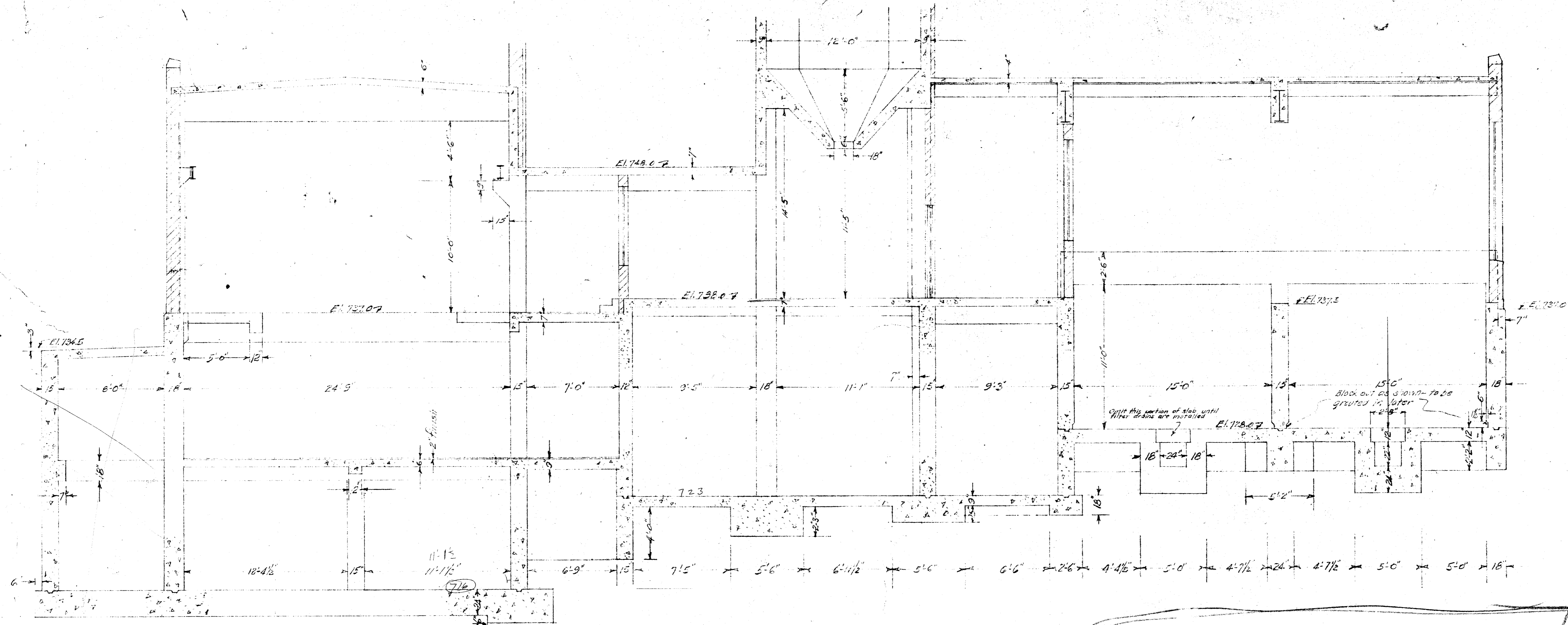
Note: Rods C: Type 1 - extend in adj. bms. each end  
 Type 2 " " " " " one "  
 Type 3 - no adj. bms.



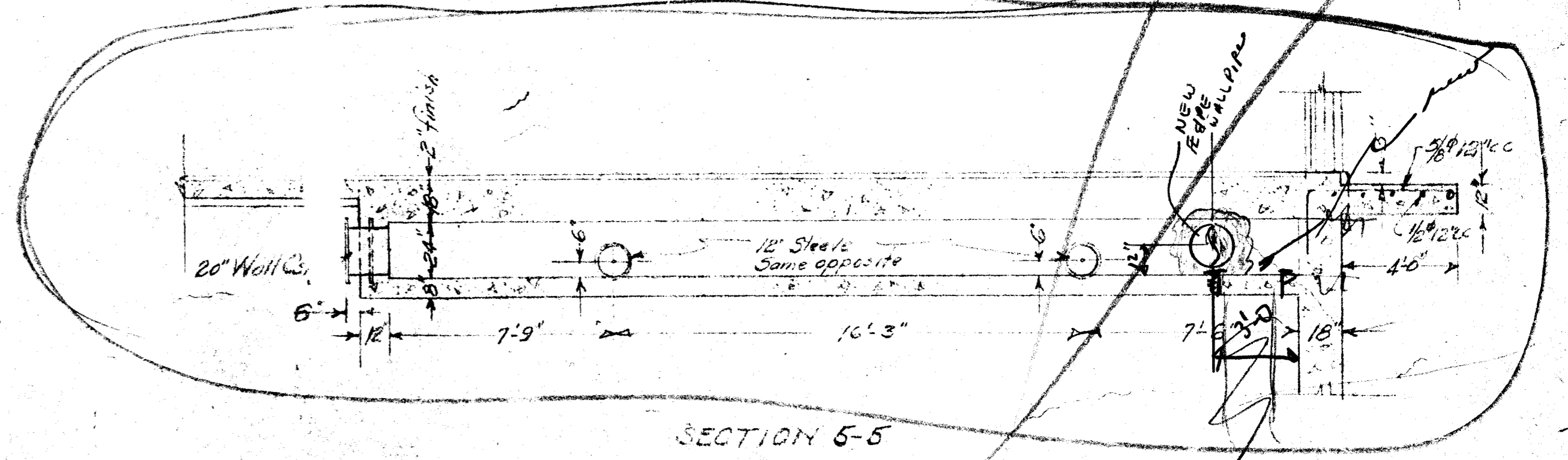
Note: All Slab Rods to have alternate rods bent up in top of slab. Where slabs are continuous bent rods shall extend in top of slab 2'-0" past face of support into adjacent panel.  
 Horizontal Wall Rods shall lap 1'-6" at splice and hook 1'-6" at corners.  
 Vertical Wall Rods lap 2'-0" at splice unless otherwise noted.  
 See Sheet 106 for framing of stairs

OWOSO - MICHIGAN  
 STRUCTURAL DETAILS

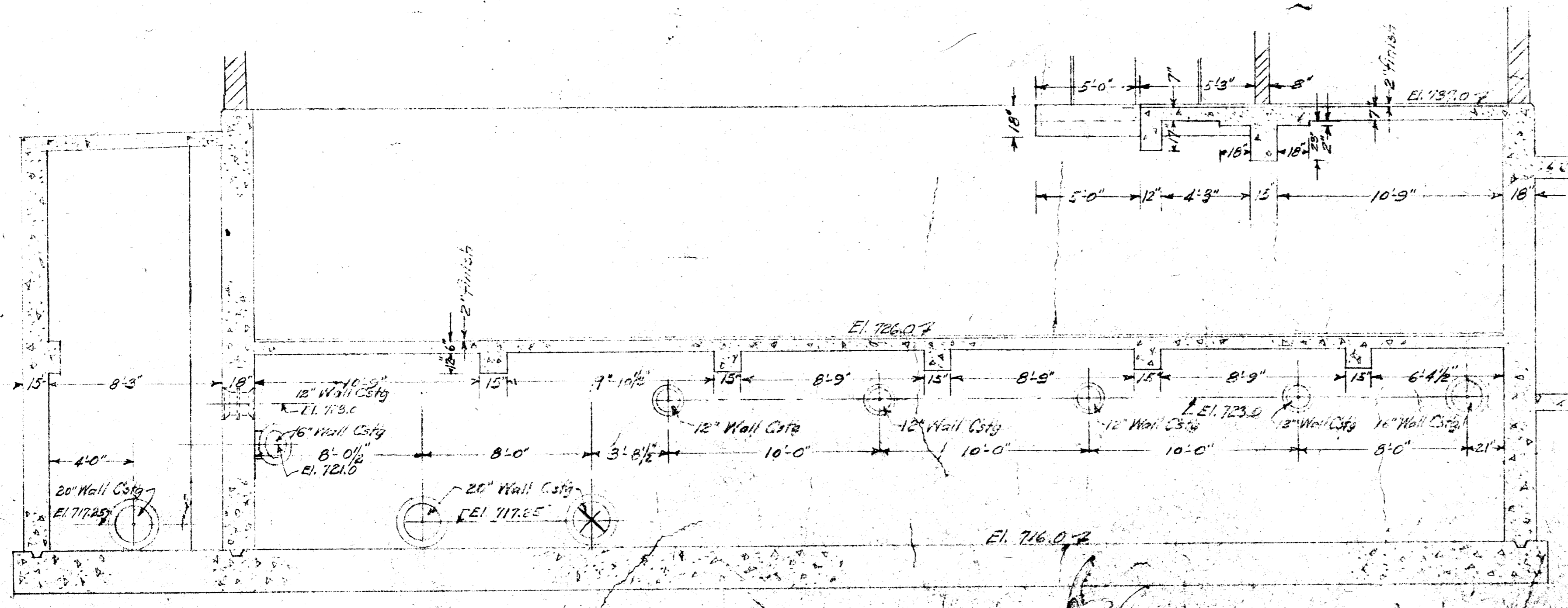




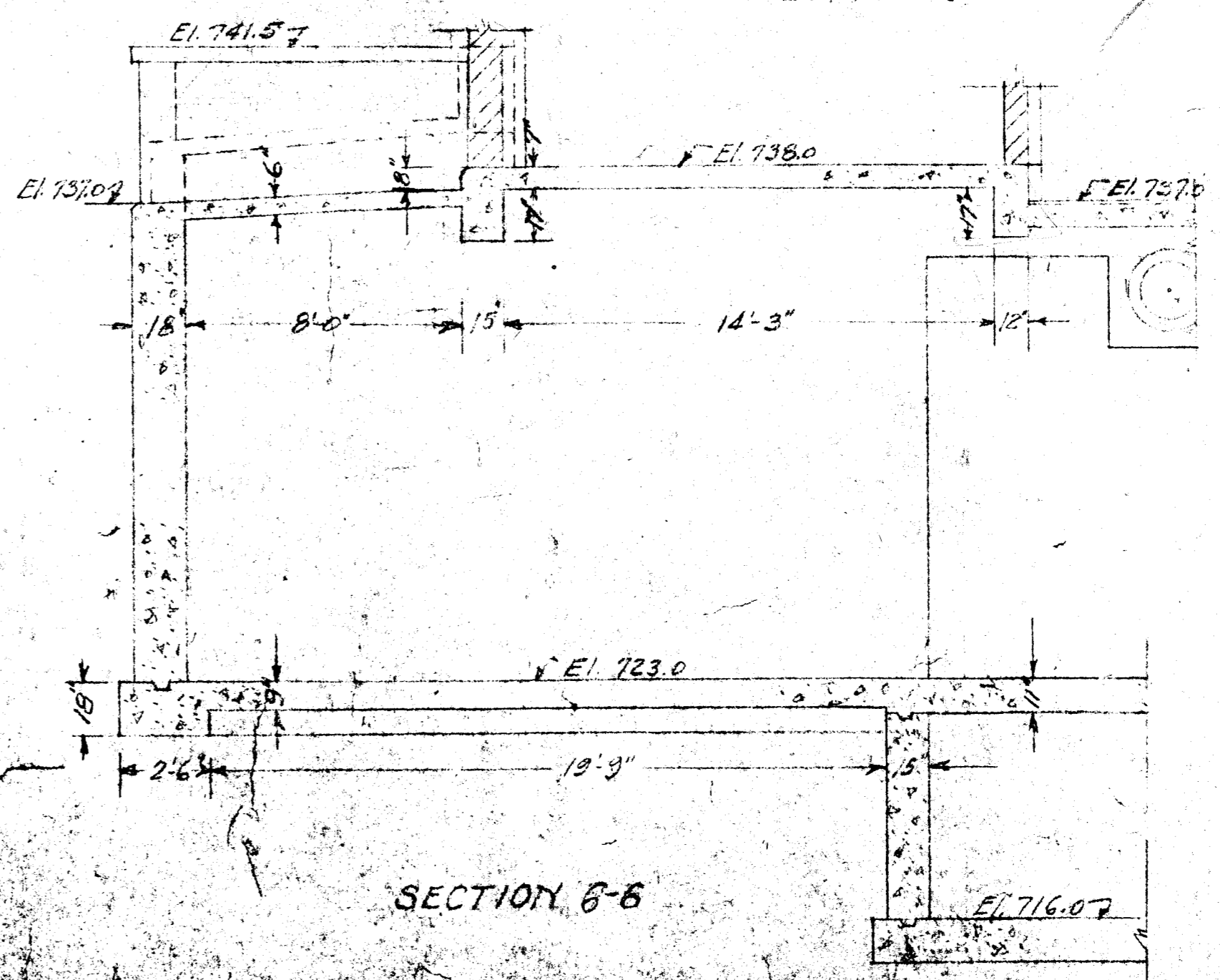
SECTION 33



SECTION 5-5



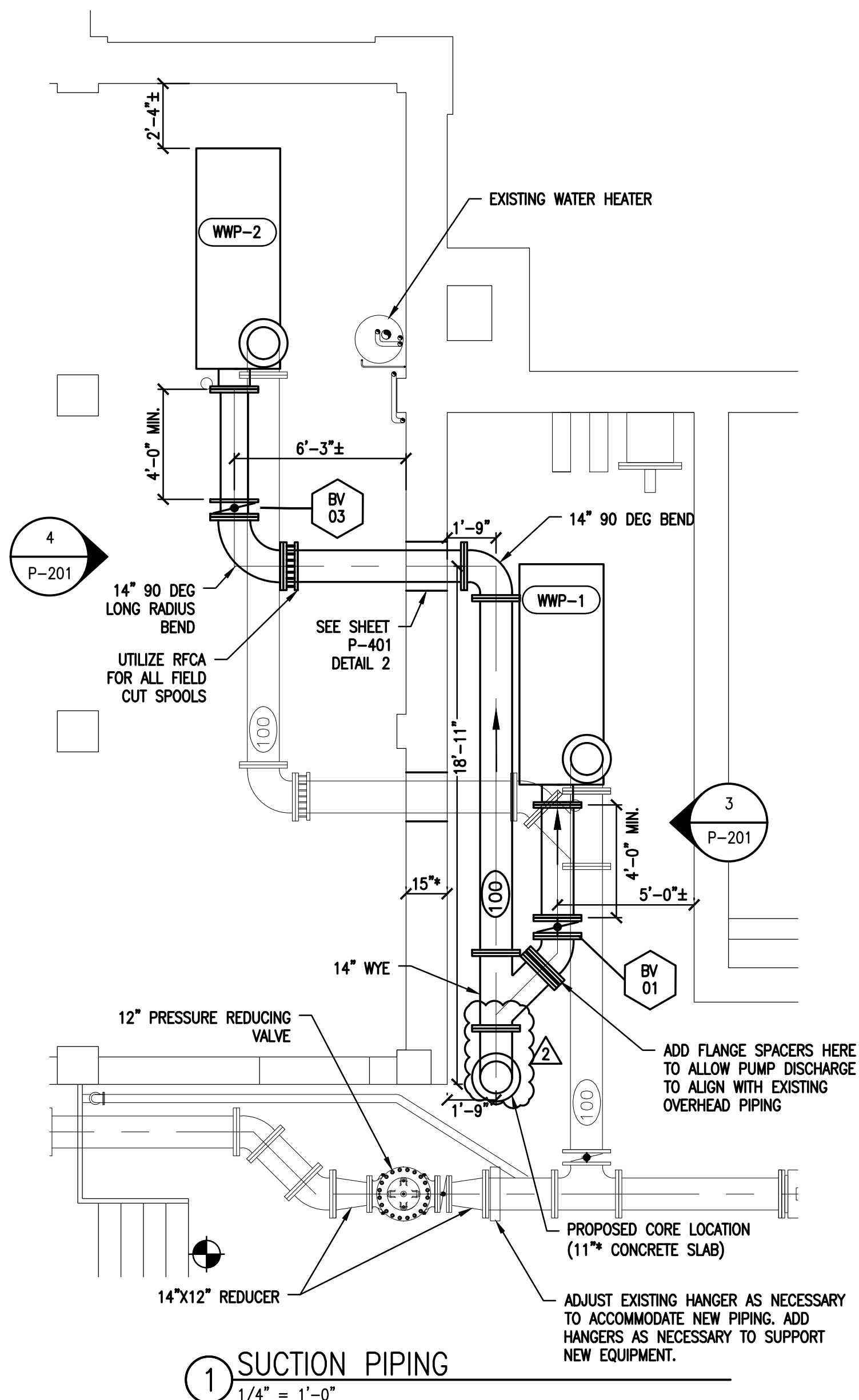
SECTION 44



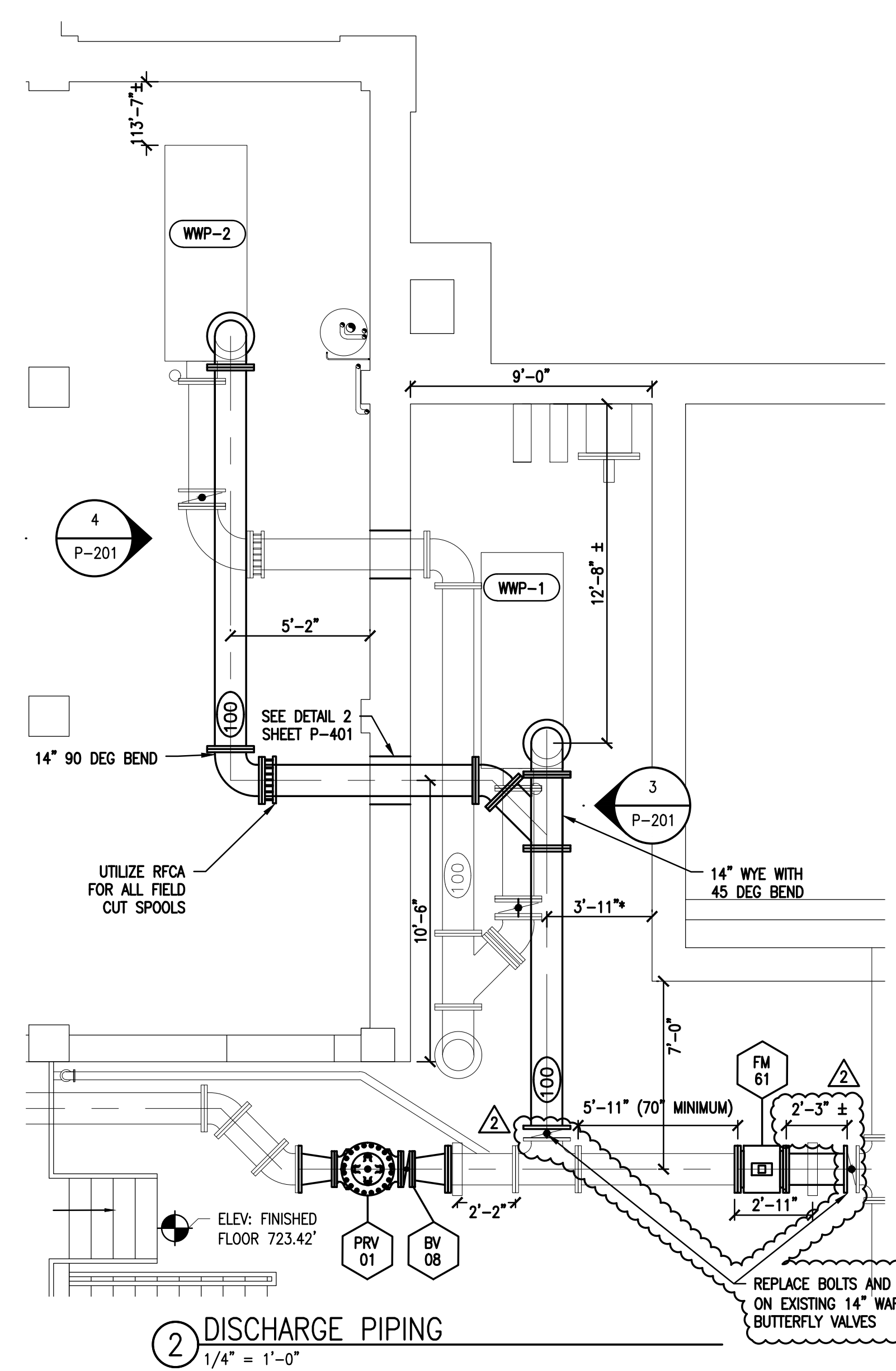
SECTION 8-8

2-6-34 6-1-36	OSHTOSSO - MICHIGAN
	WATER WORKS
	STRUCTURAL DATA
	H. R. JONES & CO. ENGINEERS

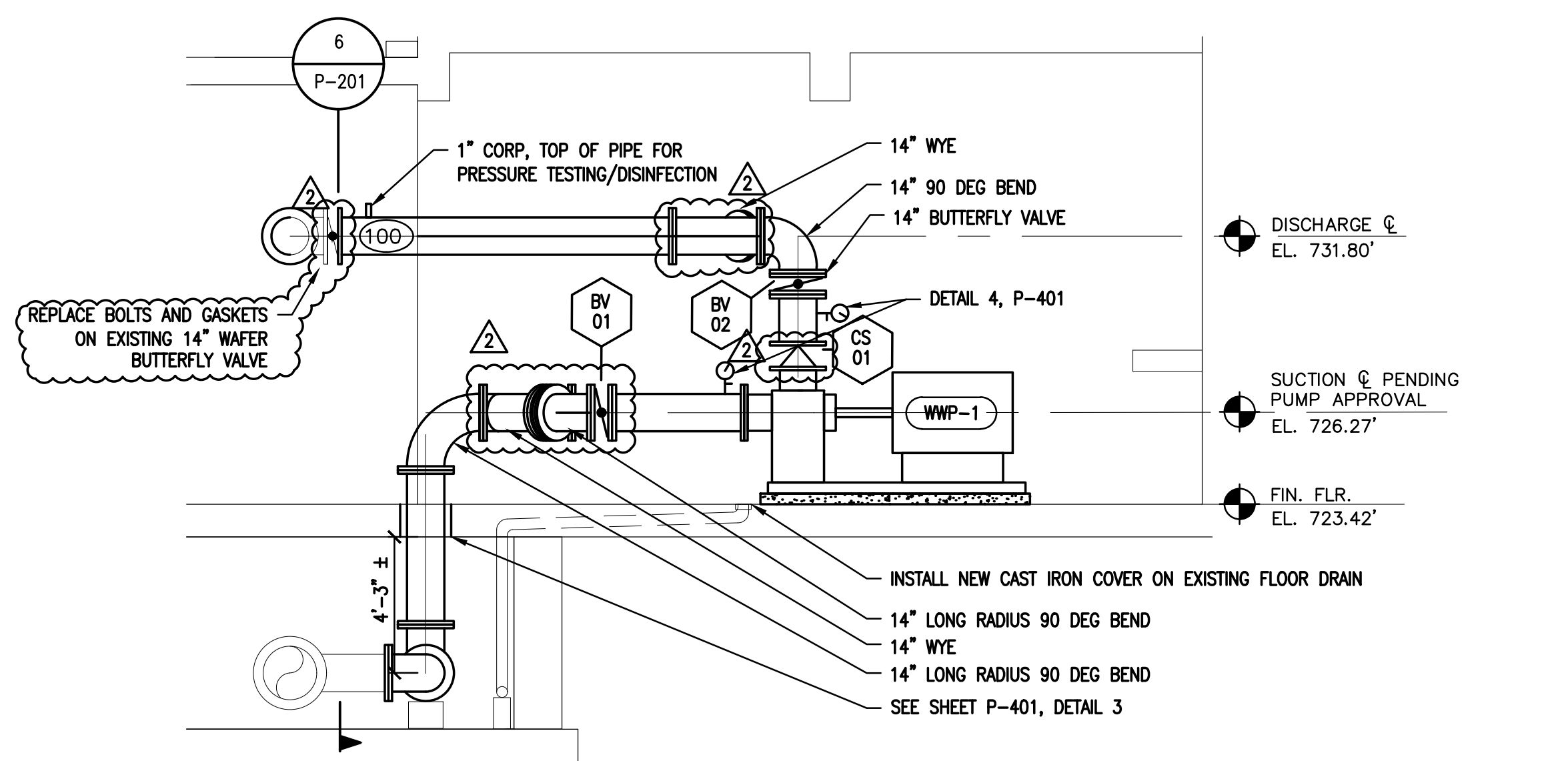
*Show this detail*



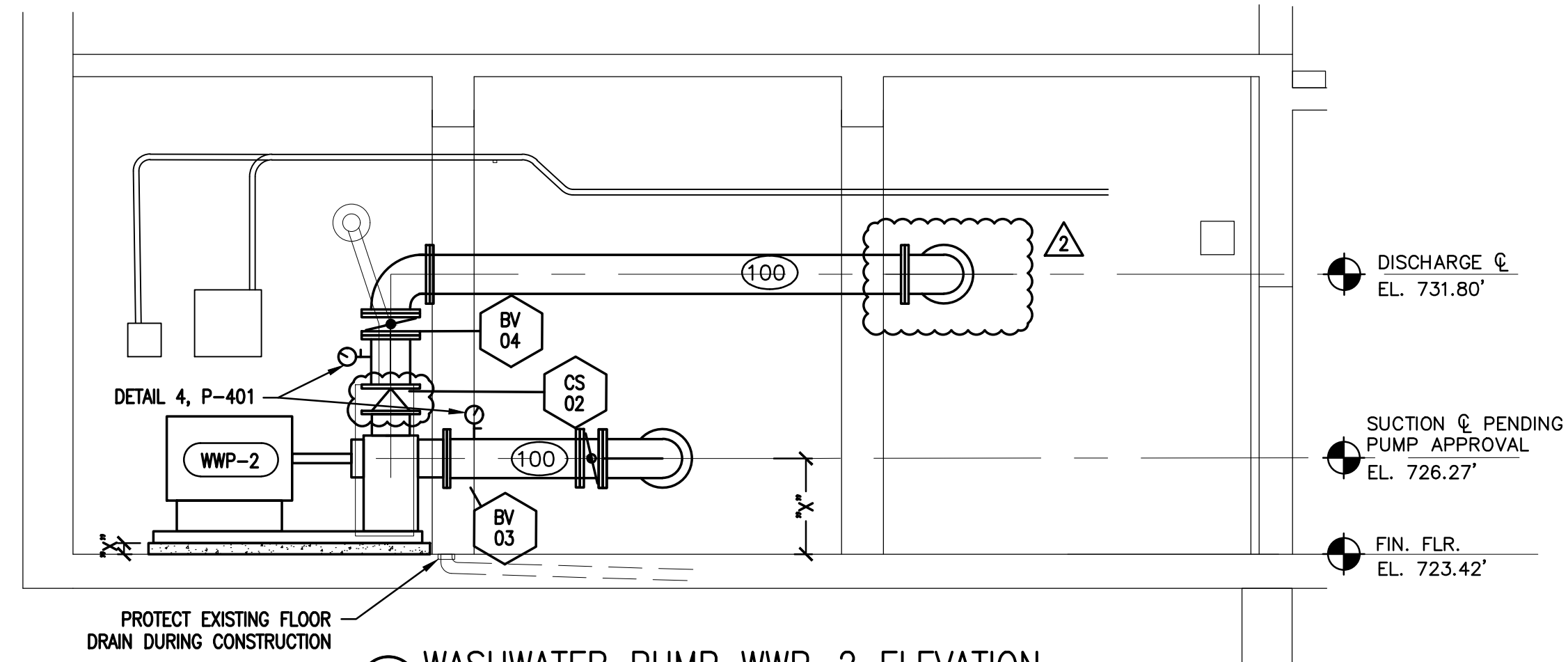
**1 SUCTION PIPING**  
 1/4" = 1'-0"



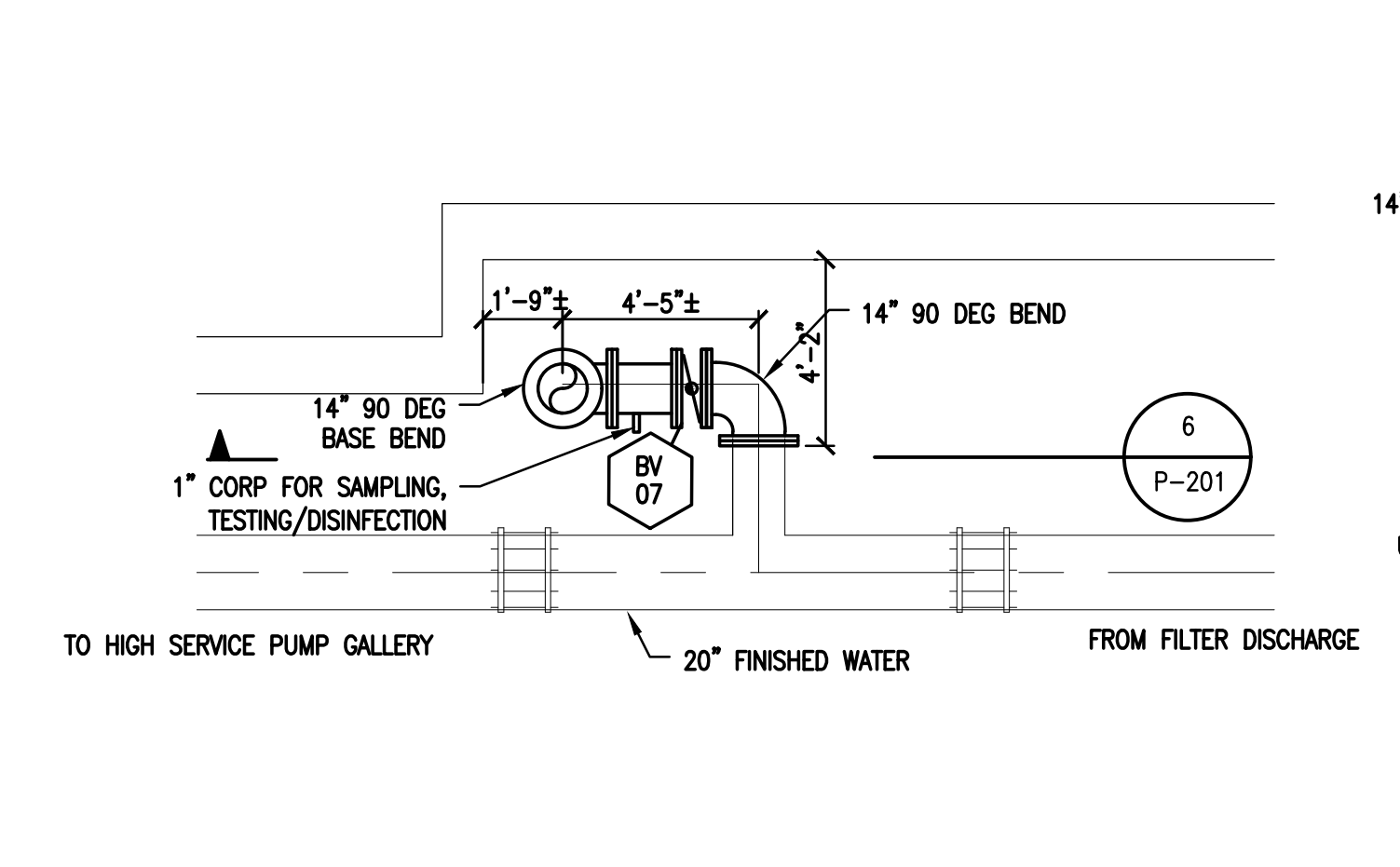
**2 DISCHARGE PIPING**  
 1/4" = 1'-0"



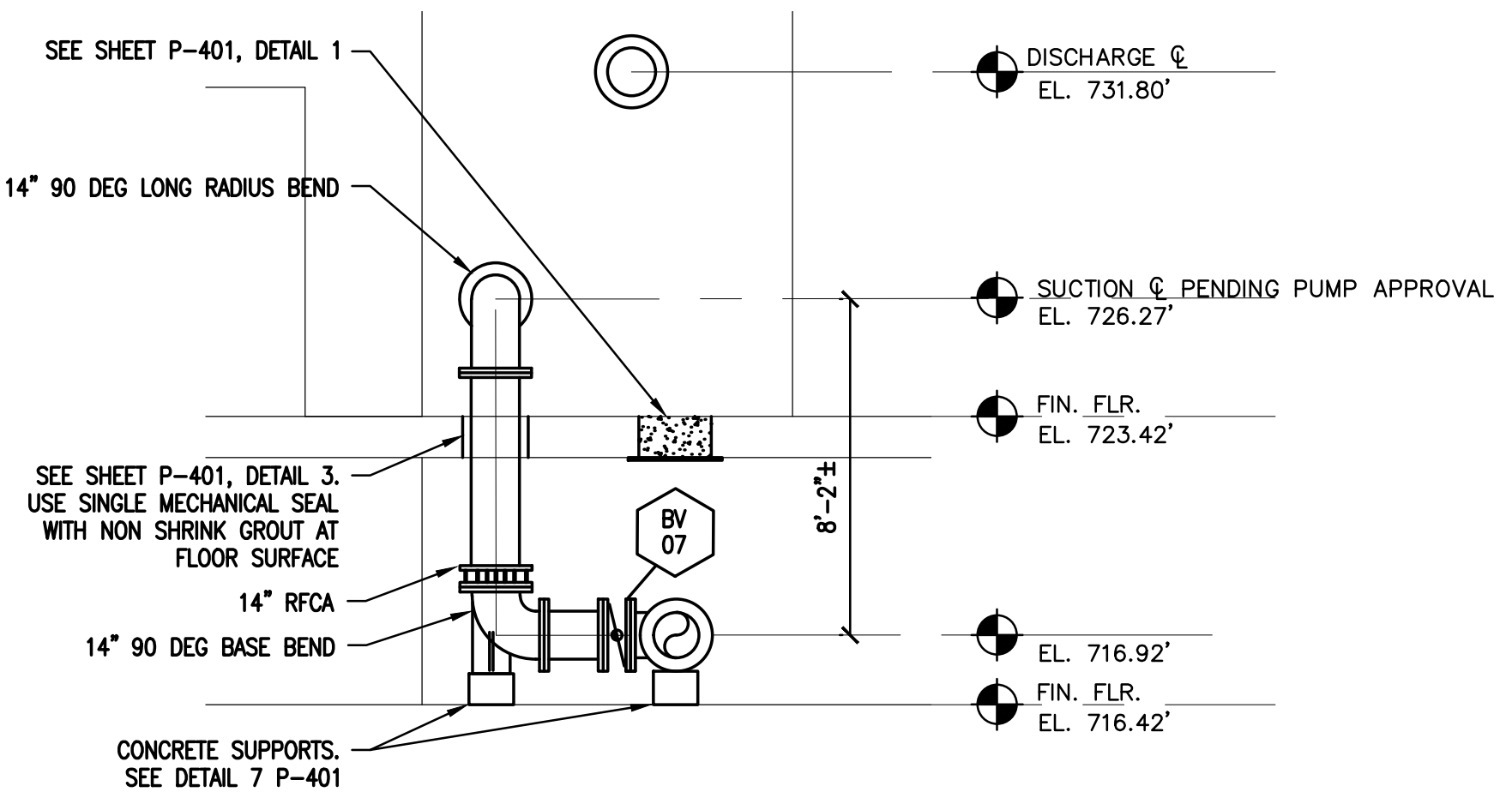
**3 WASHWATER PUMP WWP-1 ELEVATION**  
 1/4" = 1'-0"



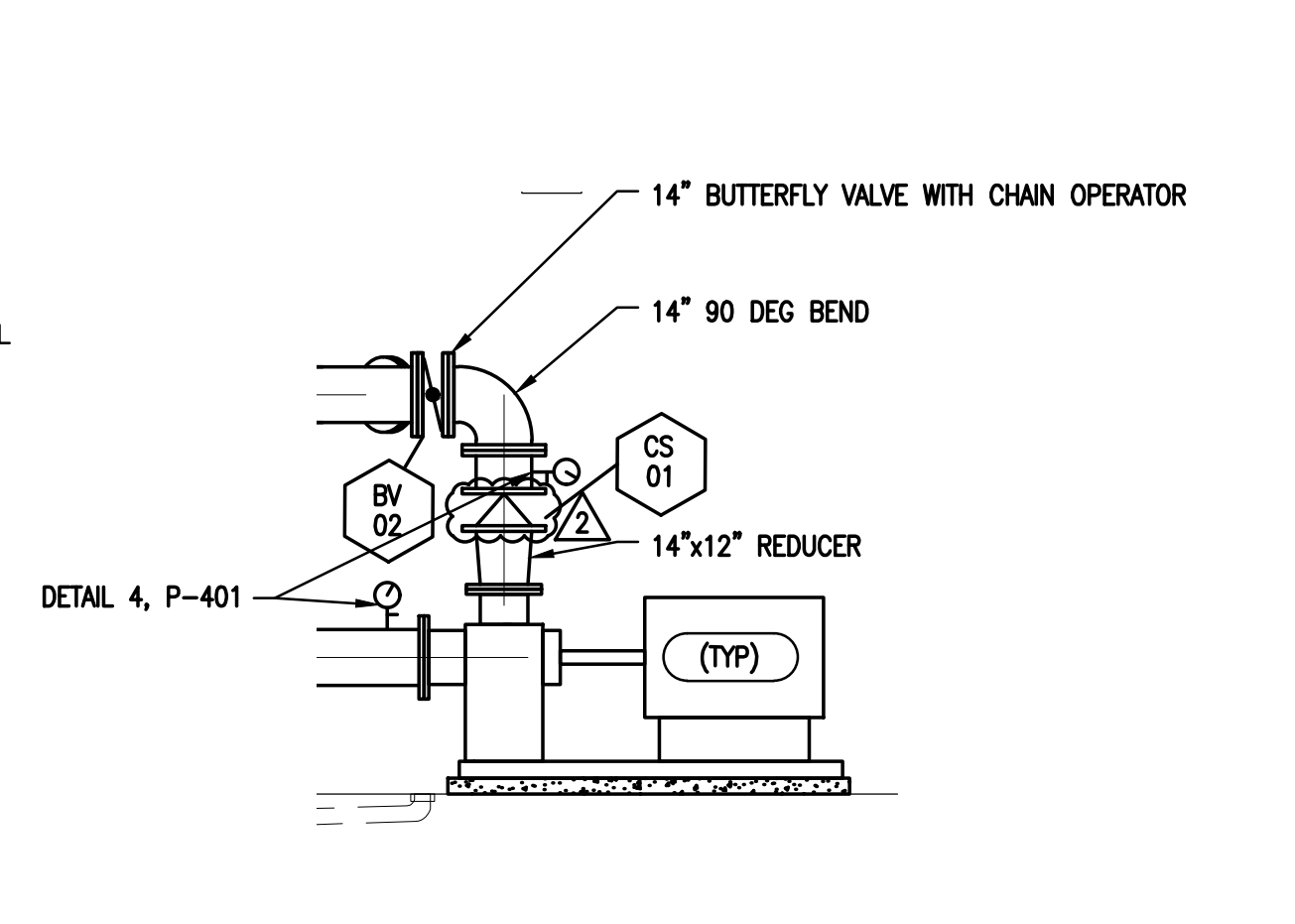
**4 WASHWATER PUMP WWP-2 ELEVATION**  
 1/4" = 1'-0"



**5 SUBBASEMENT CONNECTION PLAN VIEW**  
 1/4" = 1'-0"



**6 SUBBASEMENT CONNECTION SECTION**  
 1/4" = 1'-0"



**7 ALTERNATE PIPE LAYOUT FOR 12\"/>
 1/4" = 1'-0"**

- NOTES:**
- AN ASTERISK (\*) AT NEW CONSTRUCTION DENOTES LOCATIONS, ELEVATIONS, DIMENSIONS AND OTHER INFORMATION DEPENDENT ON THE CONTRACTOR'S SUBMITTALS. THE CONTRACTOR SHALL DEVELOP AND SHOW THE INFORMATION MARKED WITH AN ASTERISK (\*) ON HIS SUBMITTALS AND SHALL DEVELOP AND PROVIDE SUCH INFORMATION FOR ALL ASTERISKS (\*) WITHIN OR INTERFACING WITH ANY SUBMITTALS AND BETWEEN SUBMITTALS. THIS REQUIREMENT ALSO EXTENDS TO CONDITIONS OR SITUATIONS WHERE A LOCATION, DIMENSION, ELEVATION OR OTHER ITEM IS INDICATED TO BE DETERMINED AFTER FINAL SELECTION OF EQUIPMENT AND/OR APPURTENANCES. ALL INFORMATION FOR ASTERISK (\*) AND EQUIPMENT/APURTENANCES SITUATIONS DESCRIBED HEREIN ARE THE RESPONSIBILITY OF THE CONTRACTOR TO DEVELOP AND ASSURE COMPATIBLE INTERFACING FOR A COMPLETE, COORDINATED AND TROUBLE-FREE OPERATING INSTALLATION. ALL REQUIREMENTS HEREIN SHALL BE BASED ON FINAL PROCESSING AND/OR REVIEW OF THE CONTRACTOR'S SUBMITTALS OR SELECTIONS.
  - DIMENSIONS "x" OR WITH ± WILL BE DEPENDENT UPON THE PUMP SELECTED. PIPING & EQUIPMENT PAD SHALL BE ADJUSTED ACCORDINGLY.
  - CONTRACTOR TO ADD FLANGE SPACERS BETWEEN BUTTERFLY VALVES AND ADJACENT FITTING IF NECESSARY TO PROVIDE OPENING CLEARANCE.
  - PIPE SUPPORTS NOT SHOWN FOR NEW PUMP EQUIPMENT. CONTRACTOR TO PROVIDE ALL SUPPORTS NECESSARY TO ENSURE PIPES ARE ADEQUATELY SUPPORTED AND WEIGHT IS NOT SUPPORTED FROM PUMP FLANGES. PIPING ON SUCTION SIDE OF PUMPS TO BE SUPPORTED FROM THE FLOOR. PIPING ON DISCHARGE SIDE OF PUMPS TO BE SUPPORTED FROM CEILING. CONTRACTOR TO ACCOMMODATE EXISTING PIPING WITH PIPE SUPPORT DESIGN.

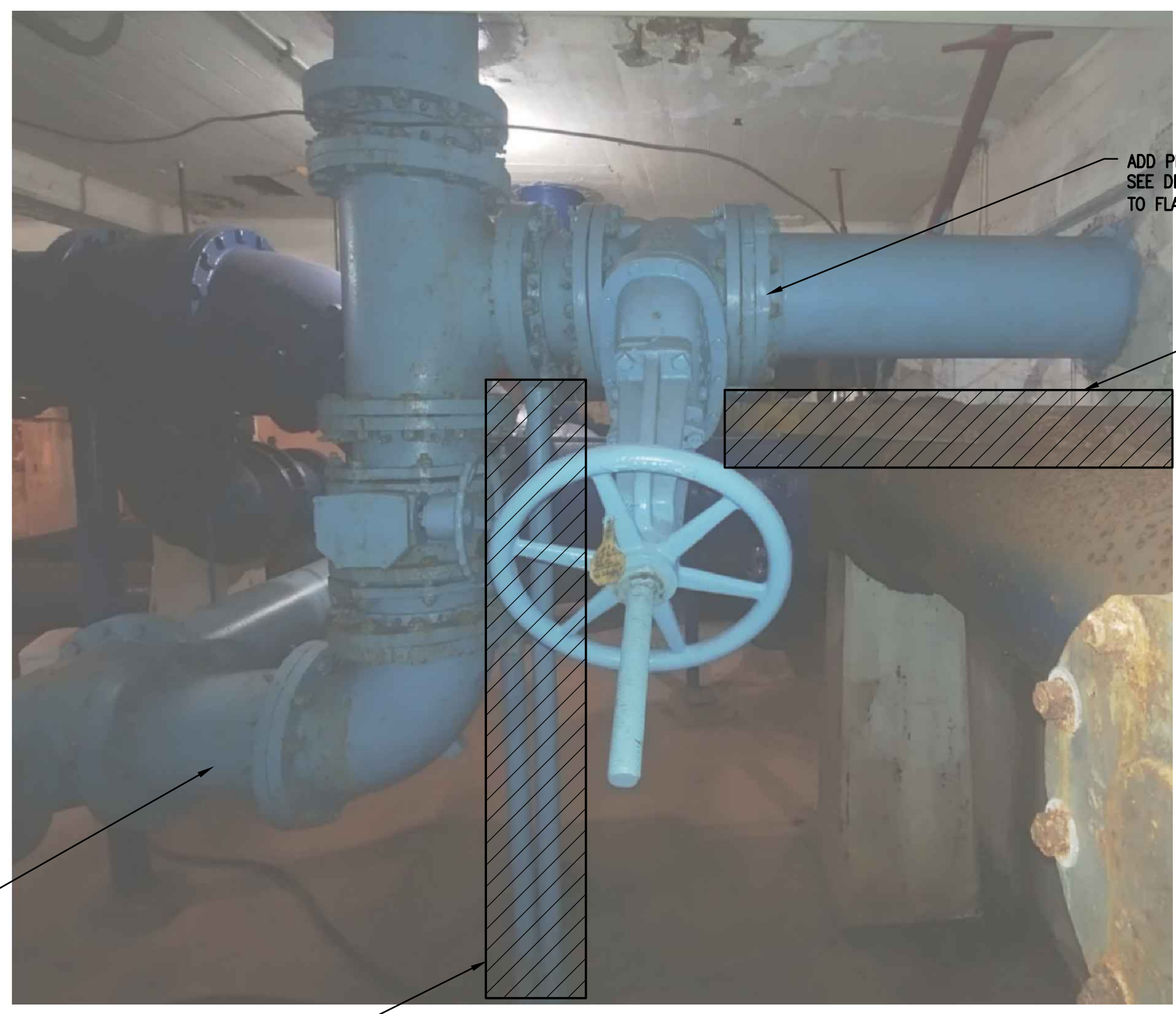
REVISIONS:  
 ISSUED FOR BIDS 12/16/2019  
 2 BID ADDENDUM #2 01/02/2020

DRAWING PATH: \\omh\dfs\omh\Projects\0000\_01\000020190400\_wpp\_desig\_services\Drawings\facilities\000400P-201.DWG Dec 31, 2019 3:12pm

COPYRIGHT 2016 OHM ALL DRAWINGS AND WRITTEN MATERIALS APPEARING HEREIN CONSTITUTE THE ORIGINAL AND UNPUBLISHED WORK OF OHM AND THE SAME MAY NOT BE DUPLICATED, DISTRIBUTED, OR DISCLOSED WITHOUT PRIOR WRITTEN CONSENT OF OHM



- NOTES:**
1. CONTRACTOR MAY COORDINATE WITH WTP SUPERINTENDENT TO SHUTDOWN AND REMOVE PROPELLER METER TO FACILITATE ACCESS TO SUBBASEMENT THROUGH HATCH. PROPELLER METER MAY ONLY BE TAKEN OUT OF SERVICE WHILE ALL OTHER SUBBASEMENT PIPING IS IN SERVICE
  2. CONTRACTOR MAY ELECT TO USE SHORTER PIPE SEGMENTS THAN WHAT IS SHOWN HERE SUBJECT TO APPROVAL BY ENGINEER. ALL CONNECTIONS SHALL BE FLANGED OR UTILIZE A RFCA. ADDITIONAL PIPE FLANGES OR RFCAS SHALL NOT INTERFERE WITH EXISTING CONCRETE PIPE SUPPORTS.
  3. PROTECT EXISTING CONCRETE SUPPORTS FOR REUSE WITH PROPOSED PIPING UNLESS OTHERWISE INDICATED
  4. REFER TO SUMMARY SPECIFICATION FOR SEQUENCE OF CONSTRUCTION
  5. DETAIL 3 WAS ORIGINALLY PRODUCED BY CAPITAL CONSULTANTS FOR OWOSSO UNDER CONTRACT 93-147 EXISTING INFORMATION (LIGHT LINE WORK) HAS NOT BEEN VERIFIED.
  6. CONTRACTOR TO MOUNT EXISTING PRESSURE SENSING TUBING TO CEILING OR WALLS. CONTRACTOR TO FIELD ROUTE.



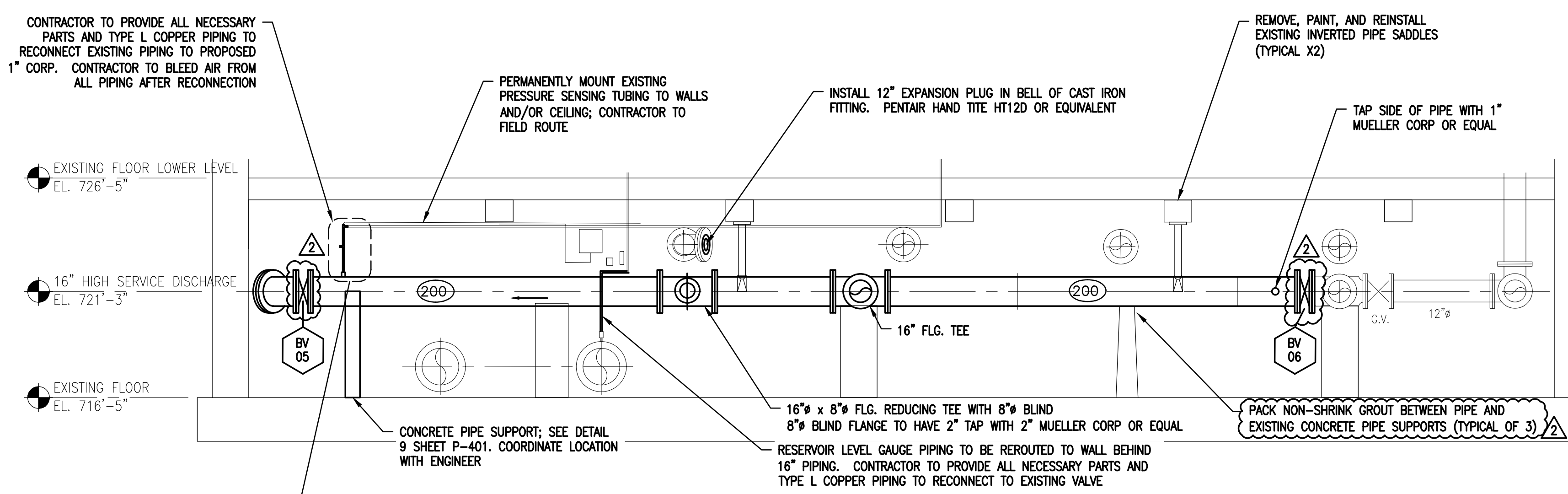
ADD PIPE SUPPORT ON 12" PIPE. SEE DETAIL 5, P-401. APPROX FLOOR TO FLANGE HEIGHT 2'-3"

ADD PIPE SUPPORT ON 12" PIPE. SEE DETAIL 5, P-401. APPROX FLOOR TO FLANGE HEIGHT 6'-1"

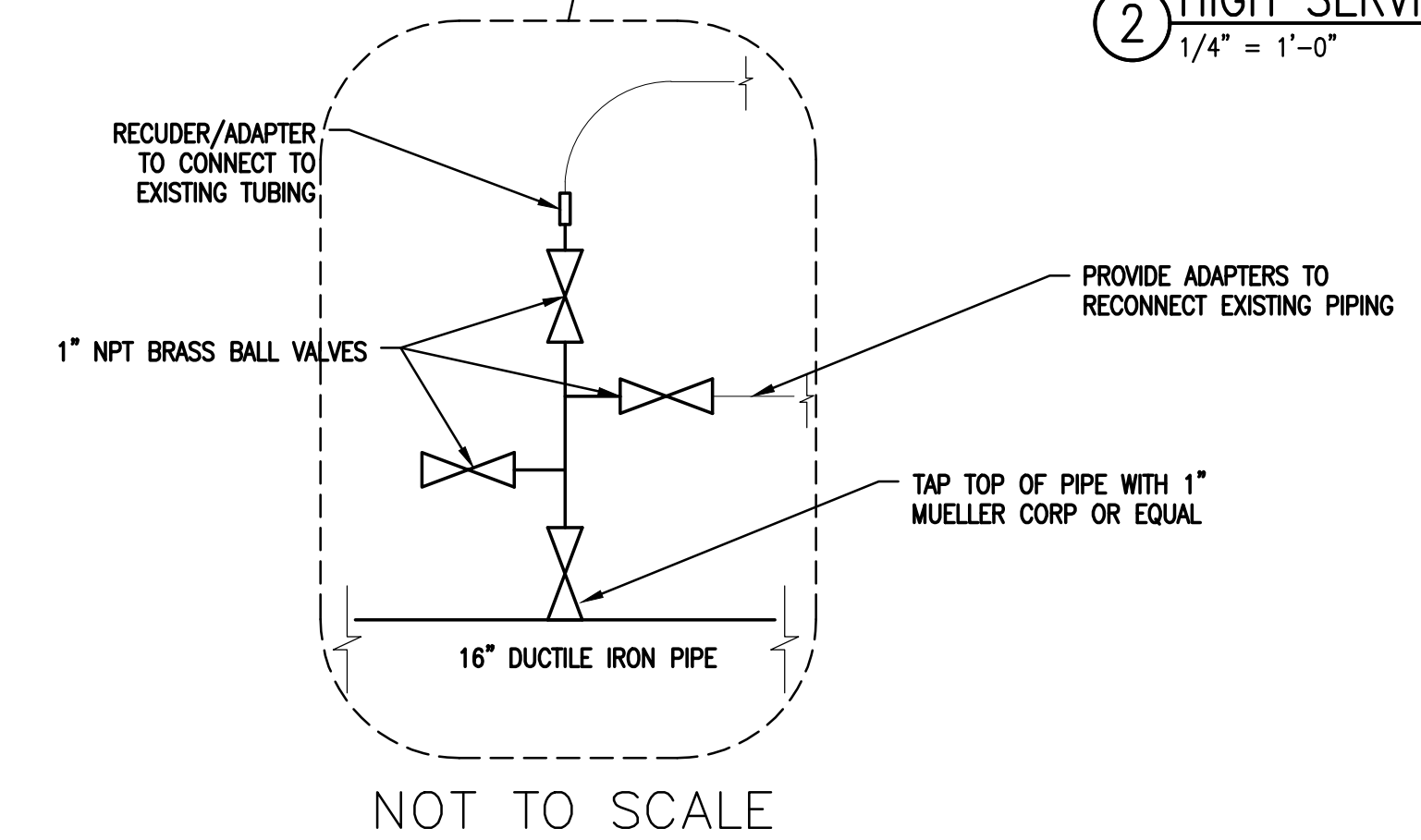
REMOVE I-BEAM AFTER NEW SUPPORTS ARE INSTALLED

REMOVE EXISTING PIPE SUPPORTS AFTER NEW SUPPORTS ARE INSTALLED

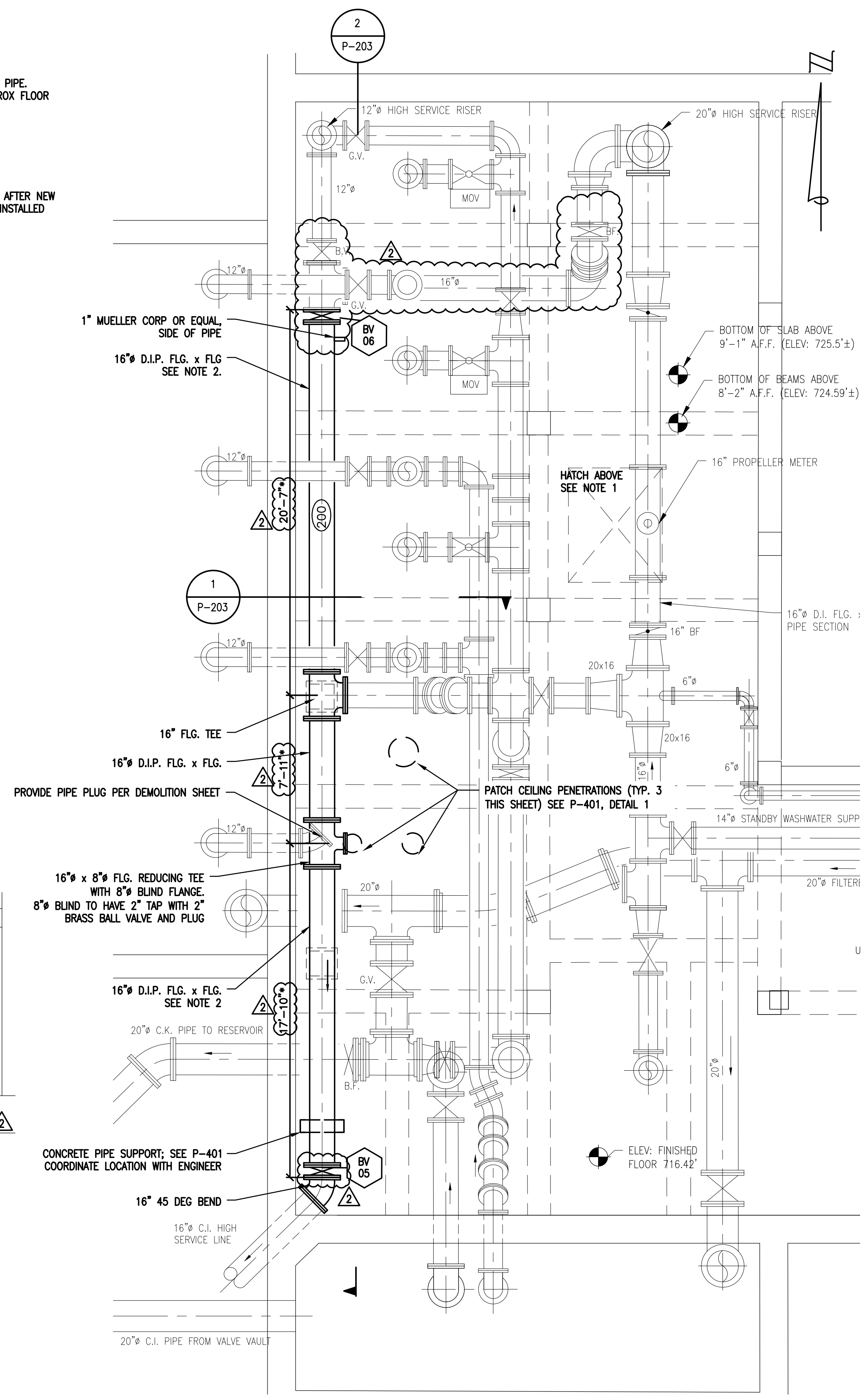
**1 HIGH SERVICE SUCTION - PIPE SUPPORT REPLACEMENT**  
 NO SCALE



**2 HIGH SERVICE PIPE ELEVATION**  
 1/4" = 1'-0"



NOT TO SCALE



**3 HIGH SERVICE PIPE PLAN**  
 1/4" = 1'-0"

ISSUED FOR BIDS 12/16/2019  
 2 BID ADDENDUM #2 01/02/2020

DATE	PROJ NUMBER	ENG	PROJ MGR	CADD	COUNTY	CITY/VILLAGE/TOWNSHIP	SCALE	HORIZ DATUM	VERT DATUM
	020-15-040	MK	JD	LM	SHAWASSEE	OWOSSO		N/A	N/A

**CITY OF OWOSSO**  
**WASH WATER PUMP & PIPING REPLACEMENT**  
**HIGH SERVICE PIPE PLAN**

**P-203**

DRAWING PATH: \\camuldis\corporate\Projects\0000\_01\001002019040\_wtp\_design\_services\Drawings\Facilities\00040P-202.DWG Dec 31, 2019 3:13pm

COPYRIGHT 2016 OHM ALL DRAWINGS AND WRITTEN MATERIALS APPEARING HEREIN CONSTITUTE THE ORIGINAL AND UNPUBLISHED WORK OF OHM AND THE SAME MAY NOT BE DUPLICATED, DISTRIBUTED, OR DISCLOSED WITHOUT PRIOR WRITTEN CONSENT OF OHM